

**TRANSPORT**

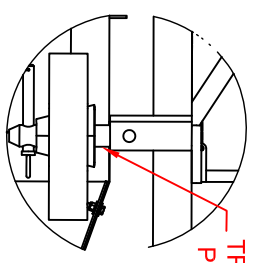
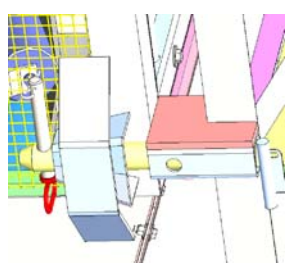
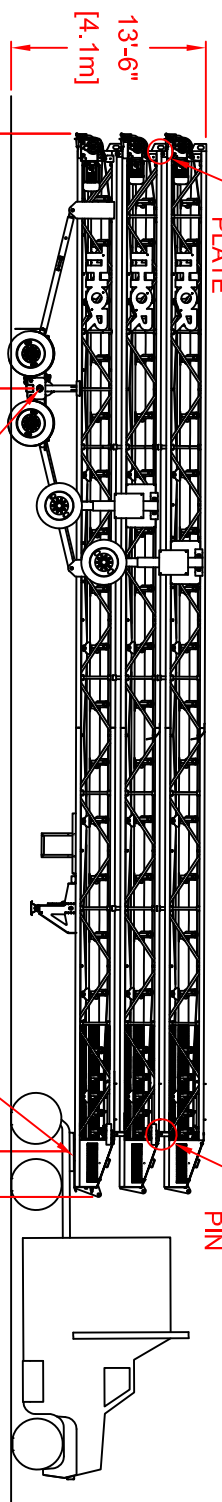
TRUSS LOCATING PLATE

13'-6"  
[4.1m]

TRUSS LOCATING PLATE

TOTAL WEIGHT = 40,505 LB

TRUSS CONNECTION PIN

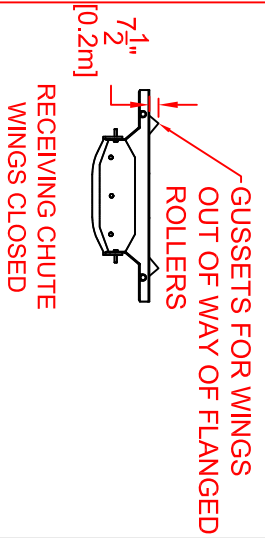
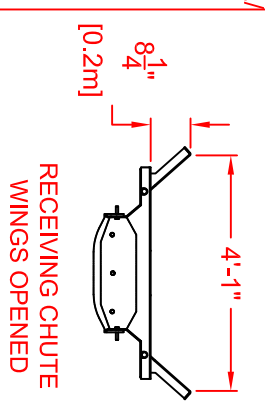


TRUSS CONNECTION PIN

**TRUSS CONNECTION PIN**

**OPERATIONAL MODE**

**TRANSPORT MODE**



**UN-LOADING/UNSTACKING**

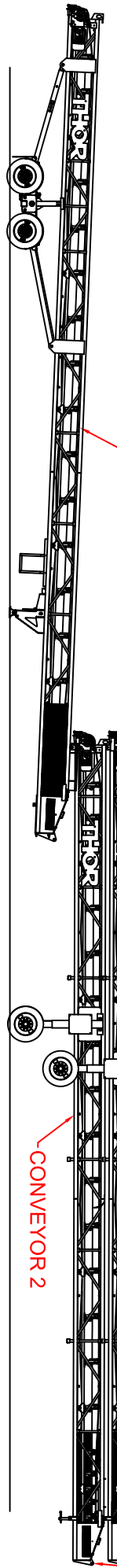
**CONVEYOR 1**

73'-9"  
[22.5m]

**CONVEYOR 3**

52'-10<sup>3</sup>/<sub>4</sub>"  
[16.1m]

**LIFTING EYE/TOW HITCH**



**STEP-1**

**CONVEYOR 2**

13195 LB

**CONVEYOR 2**

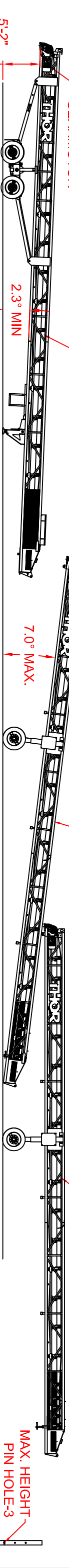
RIGHT ANGLED GEAR MOTOR

**CONVEYOR 1**

7.0° MAX.

**CONVEYOR 2**

**CONVEYOR 3**



**STEP-2**

MAX. HEIGHT PIN HOLE-3  
MIN. HEIGHT PIN HOLE-1

208'-8<sup>1</sup>/<sub>4</sub>"  
[63.6m]

MAX LENGTH

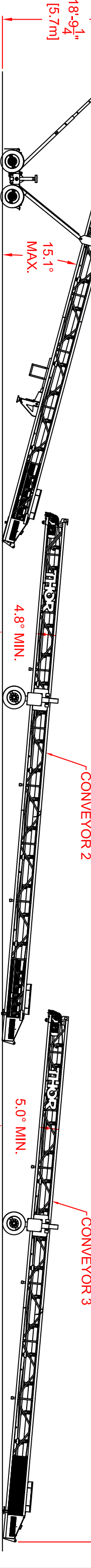
**OPERATION**

**CONVEYOR 1**

4.8° MIN.

**CONVEYOR 2**

**CONVEYOR 3**



**LOADING/STACKING**

**CONVEYOR 1**

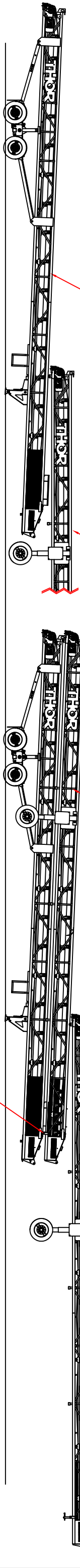
**CONVEYOR 2**

**CONVEYOR 1 & 2**

**CONVEYOR 1 & 2**

**CONVEYOR 3**

**LIFTING EYE/TOW HITCH**



**STEP-1**

**STEP-2**

**CONNECTION TRUSS**

**STEP-3**

PLEASE UNLESS OTHERWISE NOTED, ANGLES ARE IN DEGREES.

THOR GLOBAL ENTERPRISES LTD.  
 11000 160th Street, Surrey, BC V4N 1L7, Canada  
 11000 160th Street, Surrey, BC V4N 1L7, Canada  
 11000 160th Street, Surrey, BC V4N 1L7, Canada

PROJECT	THOR STACKABLE CONVEYORS
SCALE	AS SHOWN
DATE	10/02/2020
DESIGNED BY	DAVID
CHECKED BY	DAVID
APPROVED BY	DAVID
PROJECT NO.	2553
REV.	00

DESCRIPTION: STACKABLE CONVEYORS SCT/0X36