

TECHNICAL SPECIFICATIONS

TELESCOPIC PORTABLE RADIAL CONVEYOR

DRIVE, BELTING & PULLEY SPECIFICATIONS

Main (Outer) Conveyor

Model	Belt Width	Capacity	Motor	Reducer	Belting	Belt Speed	Head Pulley	Tail Pulley
T130x36-0500	36in	500 STPH	20 hp	TA4207H15	36inx152ft 330PIW 3 Ply	382 fpm	Ø16inx38in, 1/2in Dia. Lag.	Ø14inx38in
T130x36-0800	36in	800 STPH	30 hp	TA4207H15	36inx152ft 330PIW 3 Ply	525 fpm	Ø16inx38in, 1/2in Dia. Lag.	Ø14inx38in
T140x36-0500	36in	500 STPH	30 hp	TA5215H15	36inx174ft 330PIW 3 Ply	384 fpm	Ø16inx38in, 1/2in Dia. Lag.	Ø14inx38in
T140x36-0800	36in	800 STPH	40 hp	TA5215H15	36inx174ft 330PIW 3 Ply	531 fpm	Ø16inx38in, 1/2in Dia. Lag.	Ø14inx38in
T140x36-1000	36in	1000 STPH	40 hp	TA5215H15	36inx174ft 330PIW 3 Ply	531 fpm	Ø16inx38in, 1/2in Dia. Lag.	Ø14inx38in
T150x36-0500	36in	500 STPH	30 hp	TA5215H15	36inx182ft 330PIW 3 Ply	384 fpm	Ø16inx38in, 1/2in Dia. Lag.	Ø14inx38in
T150x36-0800	36in	800 STPH	40 hp	TA5215H15	36inx182ft 330PIW 3 Ply	531 fpm	Ø16inx38in, 1/2in Dia. Lag.	Ø14inx38in
T150x36-1000	36in	1000 STPH	50 hp	TA5215H15	36inx182ft 330PIW 3 Ply	529 fpm	Ø16inx38in, 1/2in Dia. Lag.	Ø14inx38in
T170x36-0500	36in	500 STPH	30 hp	TA5215H15	36inx206ft 330PIW 3 Ply	523 fpm	Ø16inx38in, 1/2in Dia. Lag.	Ø14inx38in
T170x36-0800	36in	800 STPH	(2) 20 hp	(2) TA4207H15	36inx206ft 330PIW 3 Ply	525 fpm	Ø16inx38in, 1/2in Dia. Lag.	Ø14inx38in
T170x36-1000	36in	1000 STPH	(2) 25 hp	(2) TA4207H15	36inx206ft 330PIW 3 Ply	526 fpm	Ø16inx38in, 1/2in Dia. Lag.	Ø14inx38in
T190x36-0500	36in	500 STPH	30 hp	TA4207H15	36inx222ft 231PIW 3 Ply	525 fpm	Ø16inx38in, 1/2in Dia. Lag.	Ø14inx38in
T190x36-0800	36in	800 STPH	(2) 20 hp	DIRECT DRIVE	36inx222ft 231PIW 3 Ply	532 fpm	Ø16inx38in, 1/2in Dia. Lag.	Ø14inx38in
T190x36-1000	36in	1000 STPH	(2) 25 hp	DIRECT DRIVE	36inx222ft 231PIW 3 Ply	504 fpm	Ø16inx38in, 1/2in Dia. Lag.	Ø14inx38in
T140x42-1200	42in	1200 STPH	(2) 25 hp	(2) TA4207H15	42inx179ft 330PIW 3 Ply	541 fpm	Ø20inx44in, 1/2in Dia. Lag.	Ø18inx44in
T140x42-1500	42in	1500 STPH	(2) 30 hp	(2) TA5215H15	42inx179ft 330PIW 3 Ply	543 fpm	Ø20inx44in, 1/2in Dia. Lag.	Ø18inx44in
T150x42-1200	42in	1200 STPH	(2) 25 hp	(2) TA4207H15	42inx194ft 330PIW 3 Ply	541 fpm	Ø20inx44in, 1/2in Dia. Lag.	Ø18inx44in
T150x42-1500	42in	1500 STPH	(2) 30 hp	(2) TA5215H15	42inx194ft 330PIW 3 Ply	543 fpm	Ø20inx44in, 1/2in Dia. Lag.	Ø18inx44in
T170x42-1200	42in	1200 STPH	(2) 25 hp	(2) TA4207H15	42inx208ft 330PIW 3 Ply	540 fpm	Ø20inx44in, 1/2in Dia. Lag.	Ø18inx44in
T170x42-1500	42in	1500 STPH	(2) 40 hp	(2) TA5215H15	42inx208ft 330PIW 3 Ply	545 fpm	Ø20inx44in, 1/2in Dia. Lag.	Ø18inx44in
T190x42-1200	42in	1200 STPH	(2) 30 hp	DIRECT DRIVE	42inx233ft 330PIW 3 Ply	540 fpm	Ø20inx44in, 1/2in Dia. Lag.	Ø18inx44in
T190x42-1500	42in	1500 STPH	(2) 40 hp	DIRECT DRIVE	42inx233ft 330PIW 3 Ply	546 fpm	Ø20inx44in, 1/2in Dia. Lag.	Ø18inx44in
T140x48-2000	48in	2000 STPH	(2) 40 hp	(2) TA5215H15	48inx189ft 400PIW 4 ply	546 fpm	Ø20inx51in, 1/2in Dia. Lag.	Ø18inx51in
T140x48-2200	48in	2200 STPH	(2) 50 hp	(2) TA5215H15	48inx189ft 400PIW 4 ply	544 fpm	Ø20inx51in, 1/2in Dia. Lag.	Ø18inx51in
T150x48-2000	48in	2000 STPH	(2) 40 hp	(2) TA5215H15	48inx194ft 400PIW 4 Ply	545 fpm	Ø20inx51in, 1/2in Dia. Lag.	Ø18inx51in
T170x48-1500	48in	1500 STPH	(2) 30 hp	(2) TA5215H15	48inx210ft 400PIW 4 ply	543 fpm	Ø20inx51in, 1/2in Dia. Lag.	Ø18inx51in
T170x48-2000	48in	2000 STPH	(2) 40 hp	(2) TA5215H15	48inx210ft 400PIW 4 ply	545 fpm	Ø20inx51in, 1/2in Dia. Lag.	Ø18inx51in
T170x54-2000	54in	2000 STPH	(2) 40 hp	DIRECT DRIVE	57inx210ft 400PIW 4 ply	559 fpm	Ø20inx58in, 1/2in Dia. Lag.	Ø18inx51in

NOTE: All capacities are based on aggregate (100lb/cu.ft)

TECHNICAL SPECIFICATIONS

TELESCOPIC PORTABLE RADIAL CONVEYOR

DRIVE, BELTING & PULLEY SPECIFICATIONS

Main (Inner) Conveyor

Model	Belt Width	Capacity	Motor	Reducer	Belting	Belt Speed	Head Pulley	Tail Pulley
T130x36-0500	36in	500 STPH	(2) 7.5 hp	(2) TA2115H15	36inx129ft 330PIW 3 Ply	415 fpm	Ø16inx38in, 1/2in Dia. Lag.	Ø14inx38in
T130x36-0800	36in	800 STPH	(2) 10 hp	(2) TA2115H15	36inx129ft 330PIW 3 Ply	532 fpm	Ø16inx38in, 1/2in Dia. Lag.	Ø14inx38in
T140x36-0500	36in	500 STPH	(2) 7.5 hp	(2) TA2115H15	36inx129ft 330PIW 3 Ply	415 fpm	Ø16inx38in, 1/2in Dia. Lag.	Ø14inx38in
T140x36-0800	36in	800 STPH	(2) 10 hp	(2) TA2115H15	36inx129ft 330PIW 3 Ply	532 fpm	Ø16inx38in, 1/2in Dia. Lag.	Ø14inx38in
T140x36-1000	36in	1000 STPH	(2) 15 hp	(2) TA2115H15	36inx129ft 330PIW 3 Ply	532 fpm	Ø16inx38in, 1/2in Dia. Lag.	Ø14inx38in
T150x36-0500	36in	500 STPH	(2) 7.5 hp	(2) TA2115H15	36inx141ft 330PIW 3 Ply	415 fpm	Ø16inx38in, 1/2in Dia. Lag.	Ø14inx38in
T150x36-0800	36in	800 STPH	(2) 10 hp	(2) TA2115H15	36inx141ft 330PIW 3 Ply	532 fpm	Ø16inx38in, 1/2in Dia. Lag.	Ø14inx38in
T150x36-1000	36in	1000 STPH	(2) 15 hp	(2) TA3203H15	36inx141ft 330PIW 3 Ply	552 fpm	Ø16inx38in, 1/2in Dia. Lag.	Ø14inx38in
T170x36-0500	36in	500 STPH	(2) 10 hp	(2) TA3203H15	36inx157ft 330PIW 3 Ply	552 fpm	Ø16inx38in, 1/2in Dia. Lag.	Ø14inx38in
T170x36-0800	36in	800 STPH	(2) 15 hp	(2) TA3203H15	36inx157ft 330PIW 3 Ply	552 fpm	Ø16inx38in, 1/2in Dia. Lag.	Ø14inx38in
T170x36-1000	36in	1000 STPH	(2) 20 hp	(2) TA4207H15	36inx157ft 330PIW 3 Ply	554 fpm	Ø16inx38in, 1/2in Dia. Lag.	Ø14inx38in
T190x36-0500	36in	500 STPH	20 hp*	-	36inx173ft 330PIW 3 Ply	534 fpm	Ø16inx39in, 1/2in Dia. Lag.*	Ø14inx38in
T190x36-0800	36in	800 STPH	(2) 15 hp	DIRECT DRIVE	36inx173ft 330PIW 3 Ply	622 fpm	Ø16inx39in, 1/2in Dia. Lag.	Ø14inx38in
T190x36-1000	36in	1000 STPH	(2) 20 hp	DIRECT DRIVE	36inx177ft 330PIW 3 Ply	532 fpm	Ø16inx39in, 1/2in Dia. Lag.	Ø14inx38in
T140x42-1200	42in	1200 STPH	(2) 20 hp	(2) TA3203H15	42inx133ft 330PIW 3 Ply	564 fpm	Ø18inx44in, 1/2in Dia. Lag.	Ø16inx44in
T140x42-1500	42in	1500 STPH	(2) 20 hp	(2) TA4207H15	42inx133ft 330PIW 3 Ply	564 fpm	Ø18inx44in, 1/2in Dia. Lag.	Ø16inx44in
T150x42-1200	42in	1200 STPH	(2) 20 hp	(2) TA3203H15	42inx138ft 330PIW 3 Ply	564 fpm	Ø18inx44in, 1/2in Dia. Lag.	Ø16inx44in
T150x42-1500	42in	1500 STPH	(2) 20 hp	(2) TA3203H15	42inx138ft 330PIW 3 Ply	564 fpm	Ø18inx44in, 1/2in Dia. Lag.	Ø16inx44in
T170x42-1200	42in	1200 STPH	(2) 20 hp	(2) TA3203H15	42inx159ft 330PIW 3 Ply	564 fpm	Ø18inx44in, 1/2in Dia. Lag.	Ø16inx44in
T170x42-1500	42in	1500 STPH	(2) 25 hp	(2) TA4207H15	42inx159ft 330PIW 3 Ply	568 fpm	Ø18inx44in, 1/2in Dia. Lag.	Ø16inx44in
T190x42-1200	42in	1200 STPH	(2) 20 hp	DIRECT DRIVE	42inx174t 330PIW 3 Ply	566 fpm	Ø18inx44in, 1/2in Dia. Lag.	Ø16inx44in
T190x42-1500	42in	1500 STPH	(2) 25 hp	DIRECT DRIVE	42inx174t 330PIW 3 Ply	568 fpm	Ø18inx44in, 1/2in Dia. Lag.	Ø16inx44in
T140x48-2000	48in	2000 STPH	(2) 20 hp	(2) TA4207H15	48inx132ft 500PIW 4 Ply	566 fpm	Ø18inx51in, 1/2in Dia. Lag.	Ø16inx51in
T140x48-2200	48in	2200 STPH	(2) 20 hp	(2) TA4207H15	48inx132ft 500PIW 4 Ply	566 fpm	Ø18inx51in, 1/2in Dia. Lag.	Ø16inx51in
T150x48-2000	48in	2000 STPH	(2) 30 hp	(2) TA4207H15	48inx139ft 500PIW 4 Ply	566 fpm	Ø18inx51in, 1/2in Dia. Lag.	Ø16inx51in
T170x48-1500	48in	1500 STPH	(2) 25 hp	(2) TA4207H15	48inx160ft 500PIW 4 Ply	568 fpm	Ø18inx51in, 1/2in Dia. Lag.	Ø16inx51in
T170x48-2000	48in	2000 STPH	(2) 30 hp	DIRECT DRIVE	48inx160ft 500PIW 4 Ply	566 fpm	Ø18inx51in, 1/2in Dia. Lag.	Ø16inx51in
T170x54-2000	54in	2000 STPH	(2) 30 hp	DIRECT DRIVE	54inx160ft 500PIW 4 Ply	560 fpm	Ø18inx57in, 1/2in Dia. Lag.	Ø16inx57in

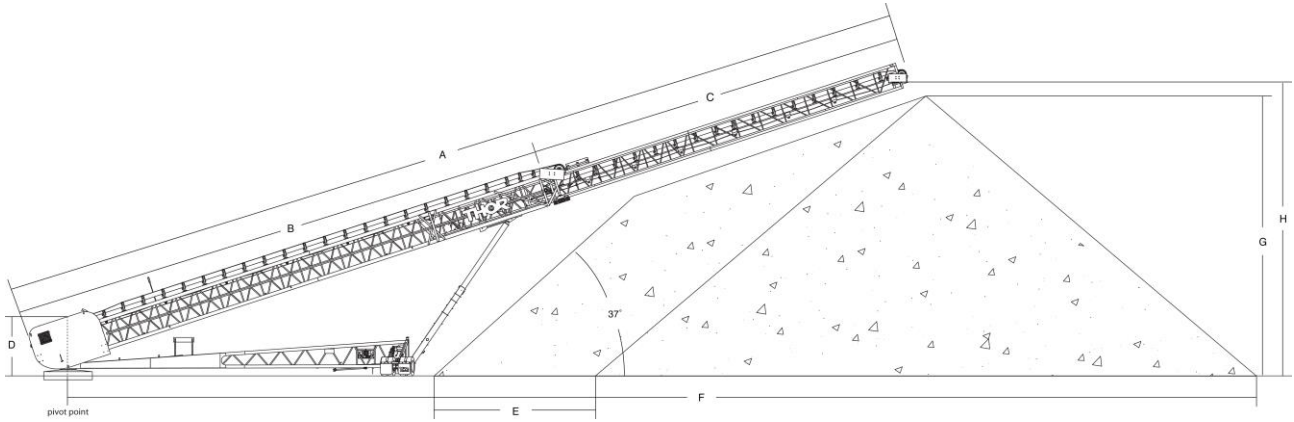
NOTE: All capacities are based on aggregate (100lb/cu.ft)

*190x36-0500S – VAN DER GRAFF MOTORIZED PULLEY, 20 HP, Ø15.74inx39.37in, 1/2in Diamond Lag

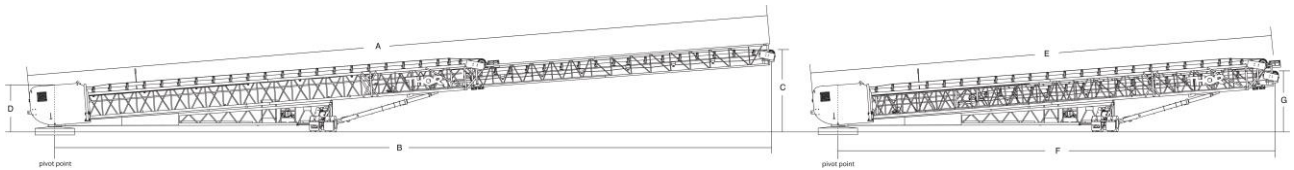
TECHNICAL SPECIFICATIONS

TELESCOPIC PORTABLE RADIAL CONVEYOR

CONVEYOR DIMENSIONS



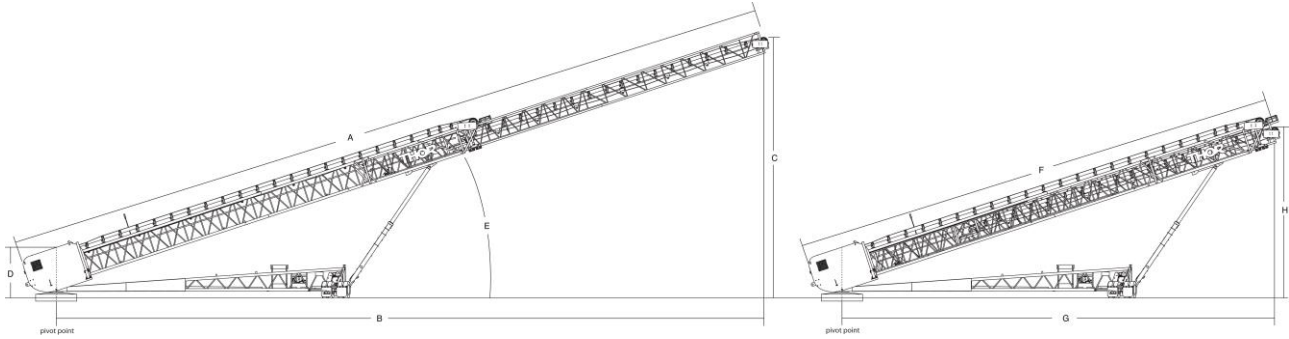
Model	A	B	C	D	E	F	G	H
T130x36-0500/0800	130ft	71ft - 1in	57ft - 11in	9ft - 8in	15ft - 1in	178ft - 9in	41ft - 9in	44ft - 0in
T140x36-0500/0800/1000	140ft	83ft - 0in	57ft - 0in	9ft - 9in	24ft - 6in	189ft - 10in	43ft - 2in	45ft - 6in
T150x36-0500/0800/1000	150ft	87ft - 0in	62ft - 8in	9ft - 11in	15ft - 0in	208ft - 7in	51ft - 9in	53ft - 10in
T170x36-0500/0800/1000	170ft	99ft - 0in	70ft - 7in	9ft - 8in	26ft - 1in	230ft - 0in	52ft - 4in	54ft - 11in
T190x36-0500/0800/1000	190ft	111ft - 0in	79ft - 0in	9ft - 9in	33ft - 10in	254ft - 8in	55ft - 10in	59ft - 10in
T140x42-1200/1500	140ft	84ft - 7in	55ft - 5in	9ft - 10in	19ft - 10in	191ft - 3in	43ft - 10in	47ft - 9in
T150x42-1200/1500	150ft	91ft - 8in	58ft - 4in	9ft - 10in	24ft - 5in	203ft - 9in	45ft - 9in	49ft - 8in
T170x42-1200/1500	170ft	98ft - 11in	69ft - 1in	10ft - 7in	28ft - 7in	227ft - 5in	50ft - 6in	54ft - 9in
T190x42-1200/1500	190ft	111ft - 4in	77ft - 6in	10ft - 6in	29ft - 6in	255ft - 6in	56ft - 1in	60ft - 4in
T140x48-2000/2200	140ft	99ft - 0in	40ft - 6in	12ft - 3in	12ft - 6in	189ft - 7in	42ft - 4in	47ft - 0in
T150x48-2000	150ft	91ft - 7in	58ft - 6in	9ft - 11in	24ft - 11in	203ft - 7in	45ft - 5in	49ft - 3in
T170x48-1500	170ft	98ft - 11in	69ft - 1in	11ft - 8in	28ft - 7in	227ft - 9in	50ft - 8in	55ft - 5in
T170x48-2000	170ft	98ft - 11in	69ft - 1in	11ft - 8in	24ft - 7in	227ft - 9in	50ft - 2in	55ft - 5in
T170x54-2000	170ft	98ft - 11in	69ft - 1in	11ft - 8in	29ft - 0in	227ft - 5in	50ft - 4in	55ft - 1in



Model	A	B	C	D	E	F	G
T130x36-0500/0800	130ft	123ft - 7in	15ft - 5in	9ft - 3in	74ft - 11in	69ft - 8in	10ft - 7in
T140x36-0500/0800/1000	140ft	134ft - 7in	16ft - 4in	9ft - 9in	84ft - 8in	79ft - 5in	11ft - 5in
T150x36-0500/0800/1000	150ft	144ft - 7in	16ft - 4in	9ft - 11in	90ft - 6in	85ft - 4in	16ft - 4in
T170x36-0500/0800/1000	170ft	164ft - 4in	16ft - 3in	9ft - 8in	102ft - 6in	97ft - 4in	11ft - 6in
T190x36-0500/0800/1000	190ft	184ft - 0in	15ft - 11in	9ft - 5in	114ft - 5in	109ft - 1in	11ft - 4in
T140x42-1200/1500	140ft	134ft - 8in	15ft - 7in	9ft - 5in	88ft - 10in	83ft - 8in	11ft - 6in
T150x42-1200/1500	150ft	144ft - 9in	15ft - 7in	9ft - 5in	94ft - 4in	89ft - 3in	11ft - 5in
T170x42-1200/1500	170ft	162ft - 10in	15ft - 7in	10ft - 7in	102ft - 7in	97ft - 6in	11ft - 5in
T190x42-1200/1500	190ft	183ft - 7in	17ft - 0in	10ft - 1in	117ft - 2in	117ft - 1in	12ft - 3in
T140x48-2000/2200	140ft	134ft - 3in	14ft - 3in	11ft - 2in	102ft - 4in	97ft - 2in	11ft - 10in
T150x48-2000	150ft	144ft - 10in	15ft - 4in	9ft - 5in	94ft - 10in	89ft - 9in	11ft - 4in
T170x48-1500/2000	170ft	162ft - 8in	16ft - 8in	11ft - 8in	104ft - 7in	99ft - 5in	12ft - 5in
T170x54-2000	170ft	162ft - 9in	16ft - 0in	11ft - 8in	102ft - 11in	97ft - 9in	11ft - 10in

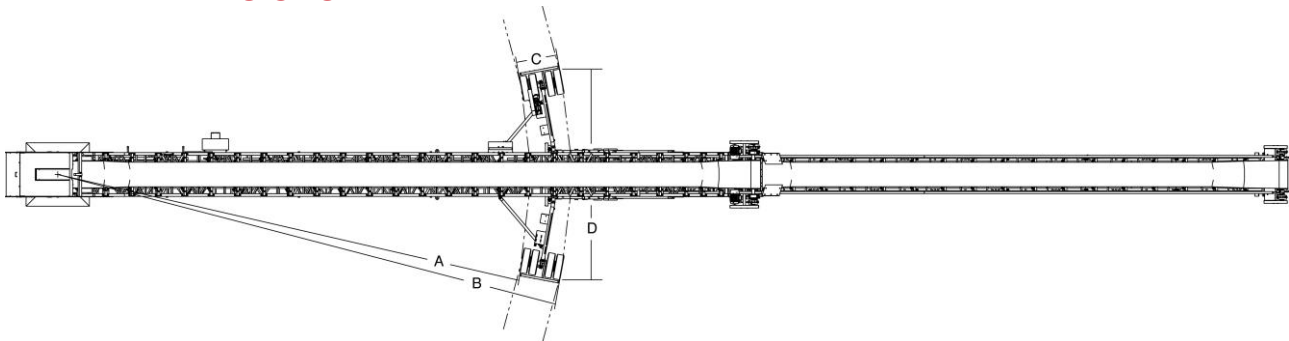
TECHNICAL SPECIFICATIONS

TELESCOPIC PORTABLE RADIAL CONVEYOR



Model	A	B	C	D	E	F	G	H
T130x36-0500/0800	130ft	116ft - 11in	44ft - 0in	9ft - 8in	19°	74ft - 10in	65ft - 7in	26ft - 8in
T140x36-0500/0800/1000	140ft	128ft - 1in	45ft - 6in	9ft - 9in	18°	84ft - 8in	75ft - 4in	28ft - 7in
T150x36-0500/0800/1000	150ft	135ft - 7in	54ft - 1in	9ft - 11in	20°	90ft - 6in	79ft - 8in	33ft - 8in
T170x36-0500/0800/1000	170ft	156ft - 3in	54ft - 6in	9ft - 9in	18°	102ft - 6in	92ft - 4in	34ft - 1in
T190x36-0500/0800/1000	190ft	175ft - 2in	59ft - 10in	9ft - 9in	18°	114ft - 10in	104ft - 1in	38ft - 0in
T140x42-1200/1500	140ft	127ft - 4in	47ft - 8in	9ft - 10in	18°	88ft - 10in	78ft - 10in	31ft - 4in
T150x42-1200/1500	150ft	137ft - 4in	49ft - 8in	9ft - 10in	18°	94ft - 4in	84ft - 4in	32ft - 5in
T170x42-1200/1500	170ft	154ft - 6in	54ft - 6in	10ft - 7in	18°	102ft - 7in	92ft - 3in	34ft - 8in
T190x42-1200/1500	190ft	174ft - 7in	60ft - 4in	10ft - 6in	18°	117ft - 2in	106ft - 3in	38ft - 9in
T140x48-2000/2200	140ft	127ft - 3in	46ft - 4in	11ft - 7in	18°	102ft - 4in	92ft - 0in	35ft - 1in
T150x48-2000	150ft	137ft - 5in	49ft - 3in	9ft - 11in	18°	94ft - 10in	84ft - 11in	32ft - 4in
T170x48-1500/2000	170ft	154ft - 3in	55ft - 5in	11ft - 8in	18°	104ft - 7in	93ft - 11in	36ft - 0in
T170x54-2000	170ft	154ft - 5in	55ft - 1in	11ft - 8in	18°	102ft - 11in	92ft - 5in	35ft - 5in

RADIAL DIMENSIONS

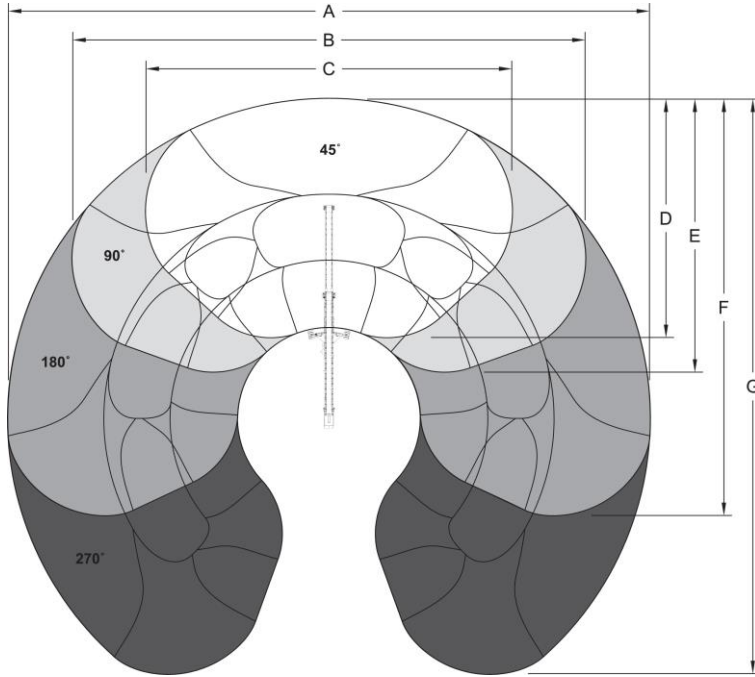


Model	A	B	C	D
T130x36-0500/0800	45ft - 9in	50ft - 11in	5ft - 2in	26ft - 1in
T140x36-0500/0800/1000	45ft - 9in	50ft - 11in	5ft - 2in	26ft - 1in
T150x36-0500/0800/1000	51ft - 6in	56ft - 8in	5ft - 2in	26ft - 1in
T170x36-0500/0800/1000	59ft - 7in	64ft - 9in	5ft - 2in	26ft - 1in
T190x36-0500/0800/1000	67ft - 5in	72ft - 7in	5ft - 2in	26ft - 1in
T140x42-1200/1500	49ft - 11in	55ft - 1in	5ft - 2in	26ft - 8in
T150x42-1200/1500	52ft - 10in	58ft - 0in	5ft - 2in	26ft - 8in
T170x42-1200/1500	59ft - 5in	64ft - 7in	5ft - 2in	26ft - 8in
T190x42-1200/1500	71ft - 5in	76ft - 7in	5ft - 2in	26ft - 8in
T140x48-2000/2200	59ft - 8in	64ft - 10in	5ft - 2in	27ft - 2in
T150x48-2000	52ft - 11in	58ft - 2in	5ft - 2in	27ft - 2in
T170x48-1500	59ft - 5in	64ft - 7in	5ft - 2in	28ft - 0in
T170x48-2000	64ft - 5in	69ft - 8in	5ft - 2in	28ft - 0in
T170x54-2000	59ft - 7in	64ft - 9in	5ft - 2in	28ft - 7in

TECHNICAL SPECIFICATIONS

TELESCOPIC PORTABLE RADIAL CONVEYOR

STOCKPILE SPECIFICATIONS



Model	A	B	C	D	E	F	G
T130x36-0500/0800	353ft - 5in	276ft - 10in	197ft - 0in	131ft - 8in	152ft - 0in	230ft - 10in	315ft - 1in
T140x36-0500/0800/1000	379ft - 8in	299ft - 6in	212ft - 10in	144ft - 2in	163ft - 8in	247ft - 2in	339ft - 7in
T150x36-0500/0800/1000	417ft - 2in	347ft - 3in	256ft - 9in	160ft - 6in	184ft - 7in	282ft - 0in	382ft - 2in
T170x36-0500/0800/1000	460ft - 0in	378ft - 0in	274ft - 3in	173ft - 6in	198ft - 5in	304ft - 3in	419ft - 0in
T190x36-0500/0800	509ft - 4in	419ft - 2in	302ft - 2in	191ft - 0in	217ft - 8in	334ft - 1in	464ft - 3in
T140x42-1200/1500	382ft - 5in	302ft - 4in	215ft - 3in	142ft - 4in	163ft - 7in	249ft - 3in	342ft - 5in
T150x42-1200/1500	423ft - 0in	348ft - 11in	254ft - 9in	163ft - 5in	185ft - 7in	282ft - 8in	386ft - 0in
T170x42-1200/1500	454ft - 10in	368ft - 9in	264ft - 5in	170ft - 2in	194ft - 3in	297ft - 3in	411ft - 9in
T190x42-1200/1500	511ft - 0in	421ft - 10in	304ft - 10in	189ft - 1in	217ft - 3in	336ft - 1in	466ft - 5in
T140x48-2000/2200	379ft - 2in	296ft - 11in	209ft - 10in	132ft - 8in	157ft - 1in	254ft - 4in	338ft - 1in
T150x48-2000	407ft - 1in	323ft - 1in	229ft - 6in	151ft - 8in	173ft - 4in	264ft - 3in	365ft - 1in
T170x48-1500	455ft - 5in	369ft - 11in	265ft - 7in	170ft - 10in	194ft - 11in	298ft - 2in	412ft - 8in
T170x48-2000	455ft - 5in	370ft - 1in	265ft - 9in	166ft - 11in	192ft - 11in	298ft - 2in	412ft - 8in
T170x54-2000	454ft - 9in	369ft - 4in	265ft - 2in	170ft - 4in	194ft - 6in	297ft - 9in	412ft - 1in

TECHNICAL SPECIFICATIONS

TELESCOPIC PORTABLE RADIAL CONVEYOR

STOCKPILE CAPACITIES

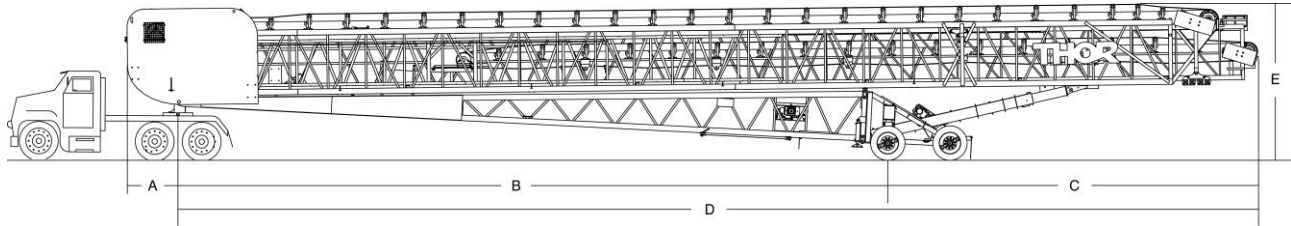
Model	Belt Width	45°	90°	180°	270°	For Each Additional 1°
T130x36-0500/0800	36in	402,304 ft ³ 20,115 tons	659,053 ft ³ 32,953 tons	1,172,565 ft ³ 58,628 tons	1,686,065 ft ³ 84,303 tons	5,706 ft ³ 308 tons
T140x36-0500/0800/1000	36in	495,191 ft ³ 24,760 tons	813,867 ft ³ 40,693 tons	1,451,232 ft ³ 72,562 tons	2,088,543 ft ³ 104,427 tons	7,081 ft ³ 354 tons
T150x36-0500/0800/1000	36in	741,934 ft ³ 37,097 tons	1,182,775 ft ³ 59,139 tons	2,064,428 ft ³ 103,221 tons	2,946,050 ft ³ 147,303 tons	9,796 ft ³ 490 tons
T170x36-0500/0800/1000	36in	893,877 ft ³ 44,694 tons	1,452,826 ft ³ 72,641 Tons	2,570,679 ft ³ 128,534 tons	3,688,621 ft ³ 184,431 tons	12,422 ft ³ 621 tons
T190x36-0500/0800	36in	1,153,630 ft ³ 57,681 tons	1,891,293 ft ³ 94,564 tons	3,366,570 ft ³ 163,328 tons	4,841,912 ft ³ 242, 095 tons	16, 393 ft ³ 875 tons
T140x42-1200/1500	42in	498,122 ft ³ 24,906 tons	818,002 ft ³ 40,900 tons	1,457,808 ft ³ 72,890 tons	2,097,600 ft ³ 104,880 tons	7,109 ft ³ 355 tons
T150x42-1200/1500	42in	739,867 ft ³ 36,993 tons	1,185,978 ft ³ 59,299 tons	2,078,300 ft ³ 103,915 tons	2,970,635 ft ³ 148,531 tons	9,915 ft ³ 496 tons
T170x42-1200/1500	42in	825,792 ft ³ 41,290 Tons	1,355,189 ft ³ 67,759 tons	2,413,913 ft ³ 120,695 tons	3,472,725 ft ³ 173,636 tons	12,645 ft ³ 632 tons
T190x42-1200/1500	42in	1,158,532 ft ³ 57,927 Tons	1,893,885 ft ³ 94,694 tons	3,364,561 ft ³ 168,228 tons	4,835,381 ft ³ 241,769 tons	16342 ft ³ 817 tons
T140x48-2000/2200	48in	439818 ft ³ 21,990 tons	725,574 ft ³ 36,278 tons	1,297,092 ft ³ 64,854 tons	1,868,661 ft ³ 93,433 tons	6,350 ft ³ 317 tons
T150x48-2000	48in	586,398 ft ³ 29,320 tons	967,026 ft ³ 48,351 tons	1,728,299 ft ³ 86,415 tons	2,489,564 ft ³ 124,478 tons	8,458 ft ³ 423 tons
T170x48-1500	48in	834,939 ft ³ 41,747 tons	1,368,468 ft ³ 68,423 tons	2,435,456 ft ³ 121,772 tons	3,502,529 ft ³ 175,126 tons	11,856 ft ³ 592 tons
T170x48-2000	48in	814,176 ft ³ 40,708 tons	1,332,097 ft ³ 66,604 tons	2,435,456 ft ³ 121,772 tons	3,502,529 ft ³ 175,126 tons	11,856 ft ³ 592 tons
T170x54-2000	54in	828,702 ft ³ 41,435 tons	1,357,259 ft ³ 67,863 tons	2,414,299 ft ³ 120,714 tons	3,471,424 ft ³ 173,571 tons	11,743 ft ³ 587 tons

TECHNICAL SPECIFICATIONS

TELESCOPIC PORTABLE RADIAL CONVEYOR

TRANSPORTATION SPECIFICATIONS

Transport Dimensions



Model	A	B	C	D	E	Transport Width
T130x36-0500/0800	5ft - 4in	56ft - 10in	14ft - 4in	71ft - 2in	13ft - 8in	11ft - 6in
T140x36-05/08/10	5ft - 4in	56ft - 11in	24ft - 7in	81ft - 5in	13ft - 7in	11ft - 6in
T150x36-05/08	5ft - 4in	62ft - 7in	24ft - 6in	87ft - 0in	13ft - 7in	11ft - 6in
T170x36-05/08/10	5ft - 4in	70ft - 6in	28ft - 9in	99ft - 3in	13ft - 11in	11ft - 6in
T190x36-05/08	5ft - 0in	78ft - 4in	32ft - 8in	111ft - 0in	13ft - 10in	11ft - 6in
T140x42-12/15	4ft - 9in	60ft - 11in	24ft - 2in	85ft - 1in	14ft - 0in	12ft - 0in
T150x42-12/15	4ft - 9in	63ft - 10in	28ft - 2in	92ft - 0in	13ft - 10in	12ft - 0in
T170x42-12/15	4ft - 9in	70ft - 7in	28ft - 10in	99ft - 4in	14ft - 3in	12ft - 0in
T190x42-12/15	4ft - 8in	82ft - 4in	31ft - 0in	113ft - 3in	14ft - 6in	12ft - 0in
T140x48-20/22						
T150x48-20	4ft - 8in	63ft - 10in	27ft - 2in	92ft - 0in	13ft - 10in	12ft - 6in
T170x48-15/20	4ft - 11in	74ft - 8in	24ft - 9in	99ft - 5in	14ft - 11in	13ft - 1in
T170x54-20	5ft - 4in	70ft - 7in	28ft - 7in	99ft - 3in	14ft - 6in	14ft - 6in

Transport Weights (Approx. Weights Only)

Model	At Kingpin	At Axles	Total Weight
T130x36-05/08	17,800 lbs	22,770 lbs	45,500 lbs
T140x36-05/08/10	17,000 lbs	28,600 lbs	45,600 lbs
T150x36-05/08/10	17,600 lbs	33,400 lbs	51,000 lbs
T170x36-05/08/10	19,000 lbs	37,000 lbs	56,000 lbs
T190x36-05/08	20,350 lbs	36,450 lbs	56,800 lbs
T140x42-12/15	23,075 lbs	44,792 lbs	67,868 lbs
T150x42-12/15	14,888 lbs	45,264 lbs	60,152 lbs
T170x42-12/15	22,250 lbs	49,550 lbs	71,800 lbs
T190x42-12/15	23,602 lbs	50,908 lbs	74,510 lbs
T140x48-20/22			
T150x48-20	21,508 lbs	55,200 lbs	76,708 lbs
T170x48-15/20	32,100 lbs	57,800 lbs	89,900 lbs
T170x54-20	37,585 lbs	59,400 lbs	96,985 lbs